

2025-2026

Discovery

Series RESOURCE GUIDE

WILD HOPE

RETHINKING OUR
RELATIONSHIP WITH NATURE

AMI VITALE

PHOTOGRAPHER



DAYTON LIVE

Your Home for Arts,
Culture & Entertainment

Friday, February 2, 2026
10:00 a.m. ONLY
Victoria Theatre

Welcome to the 2025 - 2026 Discovery Series at Dayton Live. We are very excited to be your education partner in providing professional arts experiences to you and your students!

Join photographer, filmmaker, and writer Ami Vitale as she takes us on a journey, sharing powerful stories that drive change and inspire us all to push boundaries and have impact in our daily lives. Ami's captivating stories are about people learning from wildlife and protecting endangered species like pandas, rhinos, and elephants. These uplifting narratives show us how hope and collective action are shaping a brighter future for our planet.

The information and activities in this guide have been carefully crafted to help you and your students explore the many ways a live theatre experience can create endless learning opportunities. Grade level icons will help you determine which activities are good for your students, too. Don't forget to take advantage of the local resources listed to extend the play-going experience and make even more curricular connections for you and your students. Thank you again, and welcome!



The Education & Engagement Team

Curriculum Connection

Grades
4-12

You will find these icons listed in the resource guide next to the activities that indicate curricular connections. Teachers and parents are encouraged to adapt all of the activities included in an appropriate way for your students' age and abilities. **WILD HOPE** fulfills the following Ohio State Standards and Benchmarks for 4th through 12th grades:



Learning Standards Related to **WILD HOPE** RETHINKING OUR RELATIONSHIPS WITH NATURE

FINE ARTS | Visual Arts: 4.1CR, 4.3CR, 5.1CR, 5.2CR, 5.3CR; 5.3PE; 4.1 RE, 4.3 RE, 5.1RE, 5.3RE, 6.1RE, 6.4RE, 7.3RE, 7.4RE, 8.3 RE, 8.4RE, HSP.1RE, HSP.4RE, HSI.4RE, HSAC.4RE, HSAD.4RE; 4.3CO, 5.1CO, 5.2CO, 5.3CO, 6.2CO, 7.1CO, 8.1CO, 8.3CO, HSP.1CO, HSI.1CO, HSI.3CO, HSAC.1CO, HSAC.2CO

SEL: C1.2.b, C1.2.c, C1.3.c, C1.2.d; C2.1.b, C2.2.b, C2.3.b, C2.1.c, C2.2.c, C2.4.c, C2.4.d

SCIENCE: 4.LS.1, 5.LS.1, 5.LS.2, 7LS.2, 8.LS.1; B.DI.1, B.DI.2, B.DI.3; ENV.ES.1, ENV.ER.1, ENV.ER.2, ENV.ER.3, ENV.ER.4, ENV.ER.5, ENV.GP.4, ENV.GP.8

ELA: RI.4.1, RI.4.1, RI.4.3, RI.4.8, ; RI.5.2, RI.5.3, RI.5.7, RI.6.2, RI.6.4, RI.6.6 ; RI.7.3, RI.7.6, RI.8.2, RI.8.3, RI.9-10.2, RI.9-10.6 ; RI.11-12.6

Table of Contents

Pre-Show Conversation Starters

Your Trip to the Theatre!, About Ami Vitale Page 2

Comprehension

Wildlife Conservation, Ami's TravelsPage 3

Passport EntryPage 4

The African Elephant Page 5

What Does it Mean to Be Endangered? Page 6

Creativity

Field Guide EntryPage 7

Animal Guide Page 8

A Picture is Worth a Thousand Words Page 9

Create a Conservation Poster Page 11

Read & Discuss: For Orphaned Elephants,
Friends May Be Key to Stress ReliefPage 12

Resources for Students and Adults.....Page 13

Pre-Show Conversation Starters

Get excited for your trip to the Victoria Theatre by checking out this video!

- 1** Pickle Jean, our Audience Etiquette Monitor, helped us learn about BRAVO. Do you remember what each letter stands for?
- 2** Based on this video, what are some ways you can be the best audience member you can be?
- 3** How can you as an audience member help the performers onstage do the best job they can for you?
- 4** Is this your first visit to a theatre? If so, what are you most looking forward to?



About Ami Vitale

Ami Vitale, a Nikon Ambassador and acclaimed National Geographic photographer, writer and documentary filmmaker has travelled to more than 100 countries, documenting the poignant realities of war and witnessing the transformative impact of individuals dedicated to positive change. Throughout the years, Ami has lived in mud huts and war zones, contracted malaria, and donned a panda suit—keeping true to her belief in the importance of “living the story.” Her award-winning work expands our understanding of the natural world— including our place in it.

Her stories illuminate the unsung heroes and communities working to protect wildlife and finding harmony in our natural world. Her work showcases how indigenous and local communities, whose lives have been intertwined with their lands and animals for generations, are currently leading conservation and rehabilitation efforts. From elephants, giraffes, and rhinos in Africa, to pandas in China, Ami’s photographs and films connect viewers to global issues and shine a light on our interconnectedness with the natural world.



Beyond documenting these vital stories, Ami's work serves as a conduit connecting viewers to global issues, illuminating our interconnectedness with the natural world. As the founder and Executive Director of the non-profit Vital Impacts, she extends her passion for the arts to empower and engage youth, reinforcing her commitment to leveraging creativity for positive societal impact. **(Vital Impacts/Changemaker Talent)**

Wildlife Conservation

Wildlife conservation is the efforts you can make as a human to protect our plants, animals, and the ecosystems in which we all live.

Conservation Resources best connected to Ami's work:

- ▶ Vitale, Ami. **"Ami Vitale | Extreme Conservation."** Youtube, uploaded by Exploring By The Seat Of Your Pants, 28 May 2021, https://www.youtube.com/watch?v=p189g_ao-ks. Accessed 14 Oct. 2023.
- ▶ **"Live from Ol Pejeta Conservancy | Extinction."** Youtube, uploaded by Exploring By The Seat Of Your Pants, 29 May 2021, <https://www.youtube.com/watch?v=le2xKaHPycE>. Accessed 14 Oct. 2023.
- ▶ Geoffrey, Nachamada. **"Nachamada Geoffrey | Saving Nigeria's Largest Elephant Population."** Youtube, uploaded by Exploring By The Seat Of Your Pants, 29 May 2021, <https://www.youtube.com/watch?v=1Uo9OLALJ1g&t=59s>

Key Words and Concepts

BIODIVERSITY – biological variety in an environment as indicated by numbers of different species of plants and animals

EXTINCTION – no longer existing or active/an act of extinguishing or an instance of being extinguished

ENDANGERED SPECIES – species that are facing the threat of extinction

ECOSYSTEM – a system made up of an ecological community of living things interacting with their environment especially under natural conditions

GLOBAL WARMING – the average surface temperature on Earth is slowly increasing. This directly impacts various ecosystems and habitats, and the survival of all living things.

Ami's Travels

Ami has traveled to over 100 countries, telling stories from conflict to conservation. Her work now primarily focuses on conservation efforts in Africa, Asia, and the Middle East.



Choose a country from one of these 3 continents and create a passport entry. Use web or print sources, and seek guidance from your teacher on a timeline for the assignment. The following page is your worksheet for your entry. **Be creative! Add color, imagery, and detail based on the culture you research.**

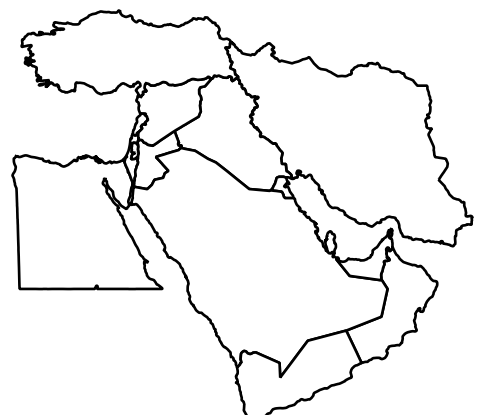
AFRICA



ASIA



MIDDLE EAST



Passport Entry

NAME OF COUNTRY _____

CONTINENT _____

CAPITAL _____

POPULATION _____

FACTS



People & Culture

Language _____

Government Type _____

Popular Foods _____

Holidays & Celebrations _____

Currency/Money _____

Religions _____

Bordering Countries _____

Famous People _____

DRAW THE COUNTRY FLAG

DRAW A FAMOUS LANDMARK

Wildlife & Climate

Geographical Features _____

Weather _____

Native Animals _____

The African Elephant

African elephants are a keystone species, which means that they play a vital role in their ecosystem. National Geographic shares that they are also known as “**ecosystem engineers**,” elephants shape their habitat in many ways. During the dry season, they use their tusks to dig up dry riverbeds and create watering holes many animals can drink from. Their dung is full of seeds, helping plants spread across the environment—and it makes pretty good habitat for dung beetles too. In the forest, their feasting on trees and shrubs creates pathways for smaller animals to move through, and in the savanna, they uproot trees and eat saplings, which helps keep the landscape open for zebras and other plains animals to thrive”.



(NationalGeographic.com, African Elephant)

The biggest threat to the species is poaching for ivory trade, and illegal trade in Africa. Prior to European colonization, there may have been up to 26 million elephants. As few as 400,000 elephants remain today. A major challenge is the length it takes for elephants to reproduce. These rates are at about 5-6% - there are not enough young being born to make up for the massive losses. Additionally, “African elephants are also losing their habitat as the human population grows and people convert land for agriculture and development. Elephants need a lot of room, so habitat destruction and fragmentation not only makes it harder for them to find food, water, and each other, but it also puts them in increased conflict with humans”.

(NationalGeographic.com, African Elephant)

FAST FACTS

- ▶ African elephants are the largest land animals on Earth! They are only slightly larger than Asian elephants.
- ▶ There are two species of African elephants – savanna and forest elephants. Both are at risk of extinction.
- ▶ The International Union for the Conservation of Nature lists savanna elephants as endangered and forest elephants as critically endangered.
- ▶ They are herbivores and eat only plants.
- ▶ Average life span = up to 70 years.

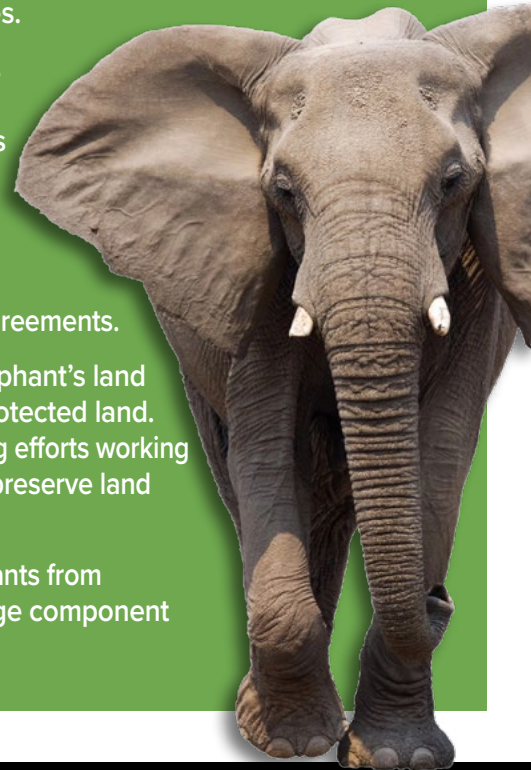
Elephant Protection and Conservation Resources

(Vital Impacts):

- ▶ **Reteti Elephant Sanctuary:** <https://www.reteti.org/>
– This is Indigenous community-owned African elephant sanctuary in Kenya takes in orphaned and abandoned elephant calves with the hope to release them back into the wild.
- ▶ **Elephant Voices:** <https://www.elephantvoices.org/>
– A general informational resource on elephants that also contains a visual and auditory library of African elephant behavior and communication.

CONSERVATION EFFORTS

- ▶ Recognizing African elephants as two separate species has helped identify the different challenges for each species. This way, more attention can be paid to the root causes.
- ▶ There are various protections for African elephants both locally in their countries of origin, and in international environmental agreements.
- ▶ Up to 70% of elephant's land range is on unprotected land. There are ongoing efforts working to set aside and preserve land for wildlife.
- ▶ Protecting elephants from poaching is a huge component of conservation.



What Does It Mean to be Endangered

Courtesy of Vital Impacts/
Changemaker Talent

Grades 6-12

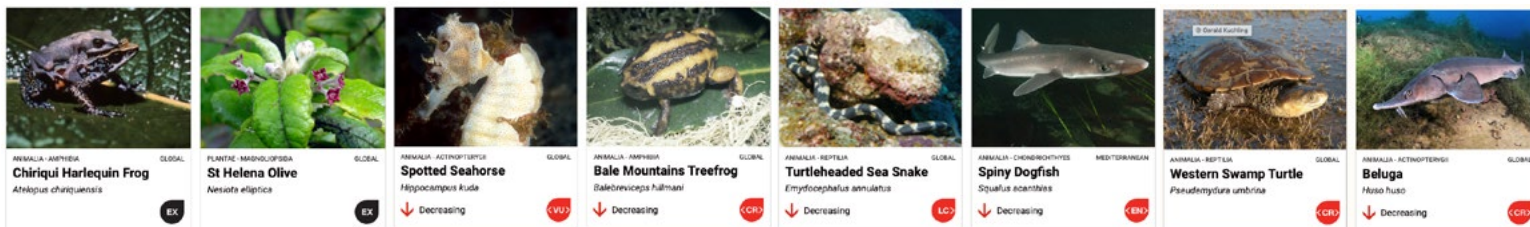
The IUCN Red List of Threatened Species. *International Union for Conservation of Nature and Natural Resources, 2023, <https://www.iucnredlist.org/>.*



EDUCATORS: Introduce students to the IUCN Red List of Threatened Species, a system for classifying species at high risk of global extinction. Species are divided into categories, including Least Concern, Near Threatened, Vulnerable, Endangered, and Critically Endangered. Students can explore this website and use it to research elephants [African savanna elephant, African forest elephant, Asian elephant], rhinos [white rhinoceros, black rhinoceros, Sumatran rhinoceros, Indian rhinoceros, Javan rhinoceros], and giant pandas (*italicized species will be most relevant to Ami's presentation*).

Afterward, they might also use this website to research an animal they are particularly interested in and report on their findings. **There are two activity sheet options on the following pages that students can utilize to track their findings; please choose what works best for your scholars: Field Guide Entry, or Animal Report. Alternatively, students can create a writing piece as individual assignments.**

Additionally, by clicking on the **'Population'** tab on each species' page, students can obtain information about how that species' population has changed over time. Some pages also have a **'Supplementary Information'** link in this section with additional data. Students can practice graphing these data points over time to visualize population changes. Then, they can compare their population graphs with dates of significant conservation actions and look for correlations and trends.



Grades 4-6

Visit the World Wildlife Fund Species Fact Sheets:

The IUCN website's densely packed information may be challenging for your younger students to navigate, they might instead look up these animals using World Wildlife Fund species fact sheets, including the white rhino, African elephant, and giant panda. Similarly, students can also use the World Wildlife Fund website to research a different animal they are interested in and report about.

"White Rhino | Species | WWF." World Wildlife Fund, <https://www.worldwildlife.org/species/white-rhino> Accessed 9 Nov. 2023.

"Giant Panda | Species | WWF." World Wildlife Fund, <https://www.worldwildlife.org/species/giant-panda/>. Accessed 9 Nov. 2023.

"African Elephant | Species | WWF." World Wildlife Fund, <https://www.worldwildlife.org/species/african-elephant>. Accessed 9 Nov. 2023.]



Field books are original records of scientific discovery. They are scientific tools to make and record observations. Anyone can use a field book, not just scientists!

Educators, follow this link for a guide for you and your students on how to create this field guide entry:
<https://naturalhistory.si.edu/education/teaching-resources/life-science/field-book-activity-making-and-recording-observations>

Field Notes

Name: _____

Date: _____

Where are you? _____

What are you looking at? _____



Record and label your observations



Notes

Animal Guide

Name: _____

Animal: _____

Scientific Name: _____

Classification: _____

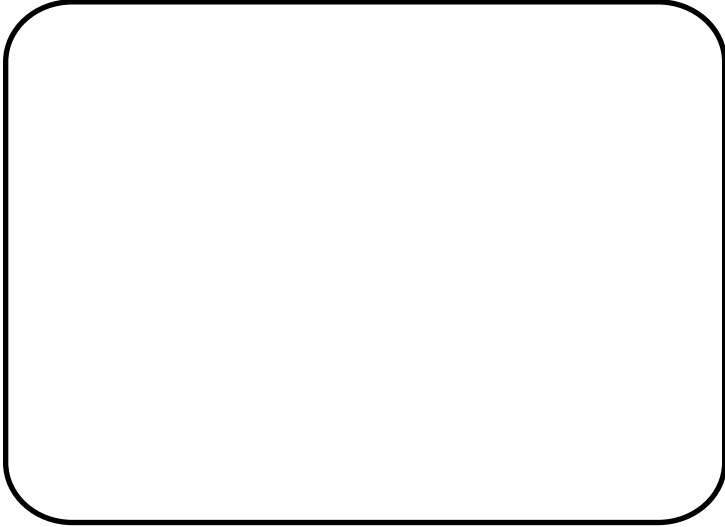
Average Population: _____

Diet: _____

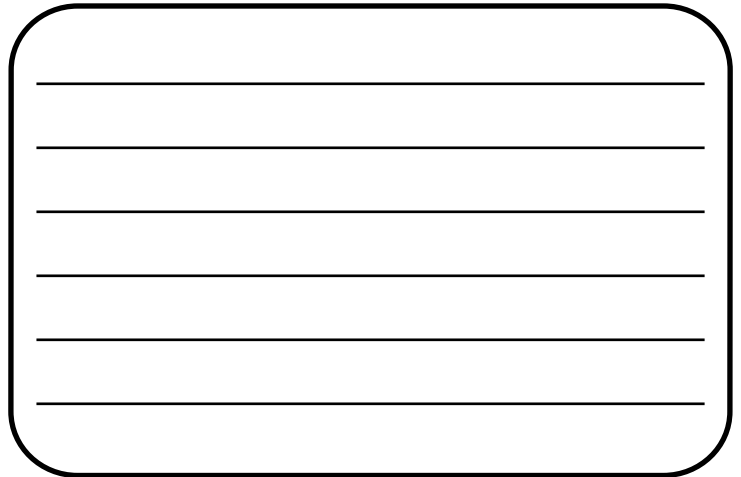
Average Size: _____

Lifespan: _____

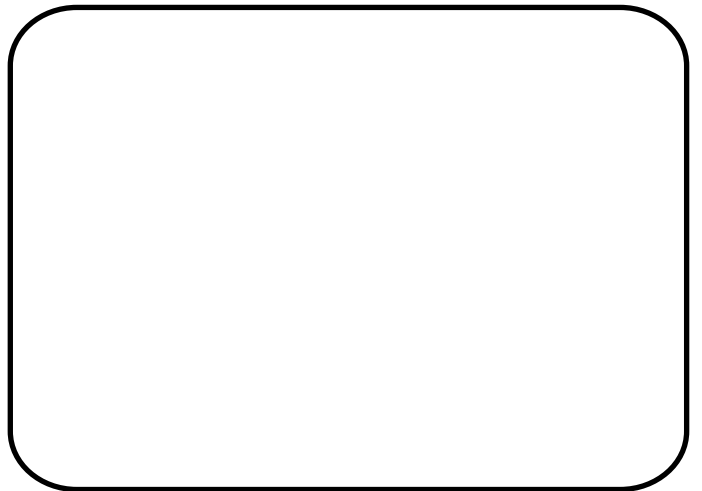
Draw Your Animal



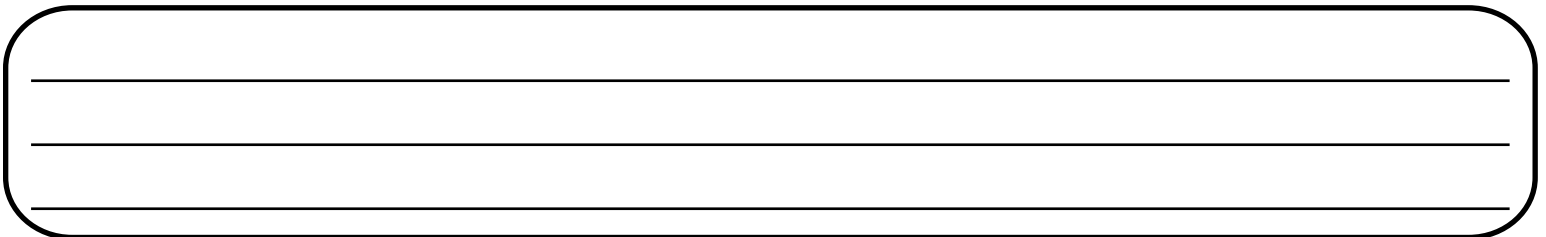
Adaptations



Describe or draw their habitat and color where they live on the world map.



Fun Facts



A Picture is Worth a Thousand Words: Interpreting Ami's Photos

Activity and Photos Courtesy of Vital Impacts and Ami Vitale

Educators: show your students the four photographs in the following link. Lead them through close looking and interpretation of the photos using the following questions. **Be sure not to share the title of the project or description of each photo until after each discussion!**

[Link to Photos](#)

PHOTO 1 Discussion questions

Photo from:
"Behind the Scenes at Reteti Elephant Sanctuary"

- 1 What do you notice in this photograph? Gather observations from students.
- 2 What do you think is going on? Encourage students to make connections and educated guesses. Who do you think this person is?
- 3 What else do you wonder about what's going on in this image?

Now reveal the context of the photograph: This is a baby elephant named Mantasian with keeper Mary Lengees at the Reteti Elephant Sanctuary in northern Kenya. The sanctuary is changing the lives of both elephants and people. This extraordinary group does so much to rescue, rehabilitate, and rewild elephant calves that are orphaned as a result of drought, human-wildlife conflict, natural mortality, and in rare cases, poaching. Lengees and most of the team at Reteti were recruited from the local community and are deeply devoted to caring for these animals.



PHOTO 2 Discussion questions

Photo from
"The Last Goodbye/Goodbye, Sudan"

- 1 What do you notice in this photograph? Gather observations from students.
- 2 What do you think is going on? Encourage students to make connections and educated guesses. Who do you think this person is?
- 3 What else do you wonder about what's going on in this image?

Now reveal the context of the photograph: This is a photo of wildlife keeper Joseph Wachira comforting Sudan, the last living male northern white rhino on the planet, moments before his death on March 19, 2018 in northern Kenya. He died surrounded by love, together with the people who committed their lives to protecting him. Today there are only two remaining northern white rhinos and they are both female, making them functionally extinct. That means they can no longer reproduce babies on their own. The photographer believes this photograph inspired people to take action. Since 2019, scientists from The Biorescue Project have already created 29 pure northern white rhino embryos using the eggs of one of the female rhinos and the frozen DNA from the deceased male rhinos. One day, they will be able to bring back the species by implanting these embryos into southern white rhino surrogates. Additional context for this photo can be found here: <https://www.capturemag.com.au/projects/farewell-to-the-last-of-a-species>



A Picture is Worth a Thousand Words: Interpreting Ami's Photos

PHOTO 3 Discussion questions

Photo from:
"Panda Love: The Secret Lives of Pandas"

- 1 What do you notice in this photograph? Gather observations from students.
- 2 What do you think is going on? Encourage students to make connections and educated guesses. Why do you think the person is wearing a panda costume? Why are they holding a young panda?
- 3 What else do you wonder about what's going on in this image?



Now reveal the context of the photograph: In 1990, the global wild panda population was approximately 1,100 individuals, and the International Union for Conservation of Nature classified them as endangered. Thanks to massive Chinese and international efforts, though, the bears rebounded, and in 2016 their status was upgraded to vulnerable. Today there are more than 1,800 pandas in the wild, and efforts to protect them and restore the species continue.

At the Wolong China Conservation & Research Center for the Giant Panda captive-bred bears training for life in the wild are kept relatively sheltered from human contact. After one generation in captivity, pandas forget how to be wild. They don't even know to run from predators.

To combat this, the center is training the young pandas how to survive in the wild. Panda keepers must wear panda costumes so the young pandas do not become familiar with humans before they are sent back into the wild. And because pandas use smell more than sight, the costumes are scented with panda urine.

Thanks to these dedicated efforts, China may be on its way to successfully saving its most famous ambassador and in the process put the wild back into an icon. To learn more and to see more photos from the experience and book, visit: <https://www.amivitale.com/photo-story/panda-love-the-secret-lives-of-pandas/>

PHOTO 4 Discussion questions

Photo from:
"Black Rhino Revival"

- 1 What do you notice in this photograph? Gather observations from students.
- 2 What do you think is going on? Encourage students to make connections and educated guesses. Who do you think these people are? What do you think is happening with this rhino?
- 3 What else do you wonder about what's going on in this image?



Now reveal the context of the photograph: A group of young Samburu warriors touch a black rhino for the first time in their lives, at the Lewa Wildlife Conservancy, in northern Kenya. Black rhinos are almost extinct in Kenya. This young calf had been orphaned when poachers killed its mother, and was hand-raised at Lewa from the time it was one-day old. It liked human contact so it welcomed the touch. However, unless a wild animal has been orphaned or born in captivity, it is not good to touch them because it can put them in danger in a variety of ways. They may get too accustomed to humans and not react properly when approached by dangerous humans, the oils on your hands may be bad for them, your scent may cause other members of their species to reject them or a variety of other reasons. Attention is often given to the effect of poaching on wildlife, but there is little focus on indigenous communities, who are on the frontline in the clash between poachers and armed game wardens. Learn more about this story here: <https://www.amivitale.com/photo-story/rhino-revival/>

Create a Conservation Poster?

Based on what you learned at the presentation, and by checking out a few resources listed below, create your own conservation poster. There are many ways we can help our planet and all its living creatures. Focus on a conservation topic of your choice, and be as creative as you wish! All you need is a blank piece of paper and any art utensils you have handy. If allowed, try using digital tools too! *Check out the examples below too:*

Resources

Leave No Trace – <https://lnt.org/why/7-principles/>

National Geographic Kids | How To Save The Planet: A Kids Guide – <https://www.nat-geokids.com/uk/discover/science/nature/how-to-save-the-planet/>

U.S. Environmental Protection Agency | WaterSense for Kids – <https://www.epa.gov/water-sense/watersense-kids>

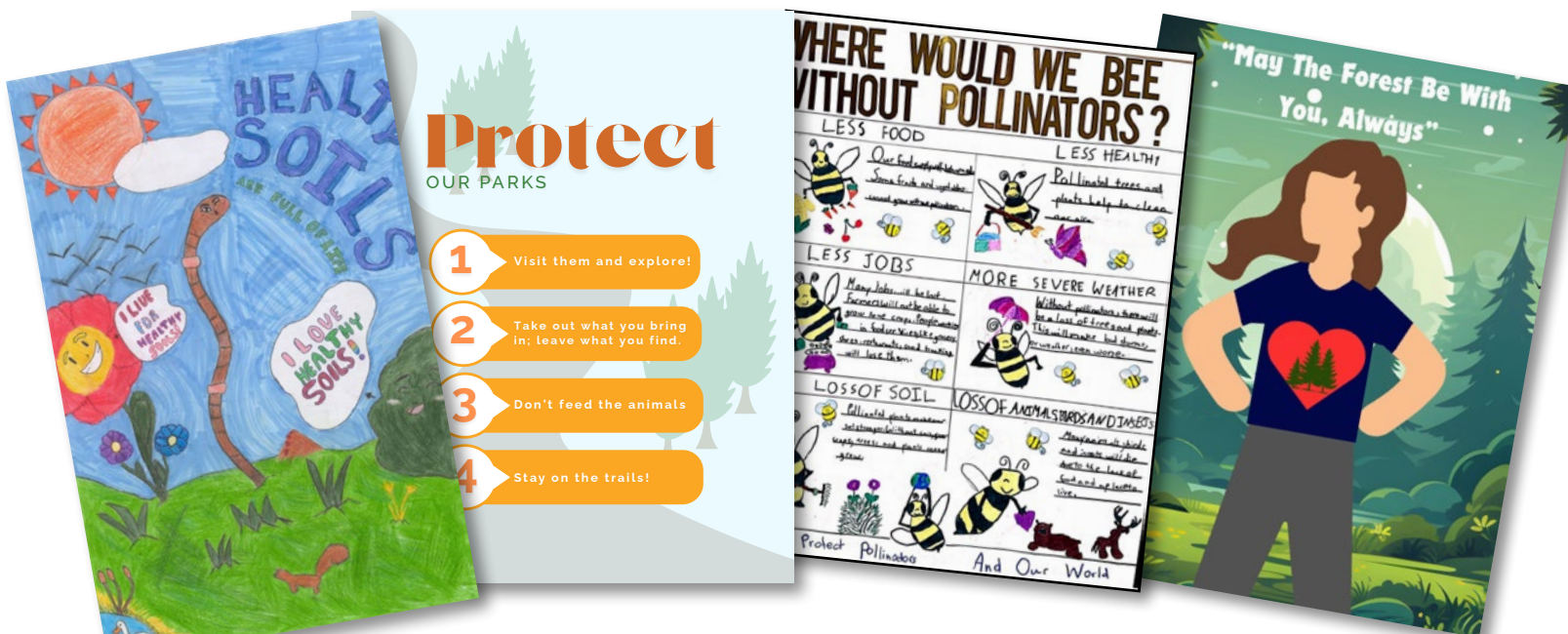
Ohio Department of Natural Resources:

- 1 **Wildfire Prevention** – <https://ohiodnr.gov/discover-and-learn/safety-conservation/smokey-bear-wildfire-prevention>
- 2 **Water Conservation** – <https://ohiodnr.gov/discover-and-learn/safety-conservation/water-conservation/water-conservation>

Five Rivers Metroparks:

- 1 **Sustainability at Home** – <https://www.metroparks.org/make-a-difference/take-action/at-home/>
- 2 **How We Do It** – <https://www.metroparks.org/what-we-do/conservation-leadership/how-we-do-it/>

Some examples of Student Conservation Posters:



Read and Discuss

For orphaned elephants, friends may be key to stress relief

Learning Objectives

Students will: Read and discuss an article about recent elephant research

Student Outcomes

After participating in this activity, students will be better able to:

- ▶ Determine a central idea of a text and how it is conveyed through particular details
- ▶ Explain some of the recent research that has been done to study orphaned elephants
- ▶ Reflect on how humans are impacting wildlife in both negative and positive ways

Materials

- ▶ Daly, Natasha. **"For orphaned elephants, friends may be key to stress relief."** National Geographic, 14 Jul. 2022, <https://www.nationalgeographic.com/animals/article/for-orphaned-elephants-friends-may-be-key-to-stress-relief#:~:text=Elephants%E2%80%94even%20the%20orphans%E2%80%94that,to%20a%202021%20national%20census.>

Vocabulary words

Hormone - a chemical substance that acts like a messenger in the body. By traveling to different parts of the body, they help control how cells and organs do certain things

Juvenile - a young organism that has not yet reached its adult form

Peers - a group of similar individuals of the same age or status

Poaching - the illegal hunting or collecting of wild animals and plants

Procedure



- 1 Give students a copy of the **National Geographic** article ***For orphaned elephants, friends may be key to stress relief*** for them to read, or read as a class/in groups.
- 2 Once everyone has finished reading, have students write down in their own notebooks answers to the following questions.
 - a. ***What is the main message of the article?***
 - b. ***What are you finding difficult to understand?***
 - c. ***What is something you found interesting?***
- 3 Pose the following 'check for understanding' questions to the class for the group to answer:

Q: ***What were the researchers measuring?***

A: Levels of stress hormones in orphaned and non-orphaned elephants.

Q: ***Why is using elephant dung to collect data such a good method?***

A: It's non-invasive, it doesn't involve any direct interaction between humans and elephants.

Q: ***Follow up question: Why is that a good thing?***

A: Taking samples directly from the animal (by drawing blood or anything similar) brings humans and elephants very close together. Elephants are still wild animals and can be unpredictable, we wouldn't want them to accidentally hurt someone / direct contact especially with a more invasive medical procedure might risk accidentally hurting the elephant / etc.



Resources for Students and Teachers

Short Films from Ami Vitale

▶ **Remembering Sudan, the Last Male Northern White Rhino**

Run time: 11 minutes, followed by a short discussion by Zacharia Mutai and filmmaker Ami Vitale



Ami Vitale has been following the story of Sudan, the last male northern white rhino, from 2009 when he was returned to Kenya's Ol Pejeta Conservancy until

2018, when he sadly passed away. The short film *Remembering Sudan* documents the heart-breaking crisis facing the northern white rhinos and keepers like Zacharia Mutai, on Ol Pejeta Conservancy, who sacrifice so much to protect them. After Sudan's death in 2018, only two northern white rhinos remain, both females. Through Zacharia's story, Vitale explores efforts to protect these rhinos as well as the groundbreaking scientific developments aimed at bringing the species back.

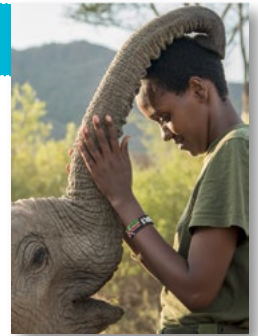
Vitale, Ami, director. **Remembering Sudan: The Last Male Northern White Rhino**, 24 Apr. 2023, <https://vimeo.com/817728435>. Accessed 13 Oct. 2023. *'This video on Vimeo requires a password: saverhinos'*

▶ **Behind the Scenes at Reteti Elephant Sanctuary**

Run time: 5 minutes

Take a peek at the day-to-day lives of the elephants and their caretakers at Reteti Elephant Sanctuary through this footage shot by Ami. Get a glimpse into a powerful story of community.

Vitale, Ami, director. **Behind the Scenes at Reteti Elephant Sanctuary**. Vimeo, 12 Aug. 2019, <https://vimeo.com/353382014>. Accessed 13 Oct. 2023.



▶ **Falling in Love with a Unicorn**

Run time: 16 minutes

Listening to an inspiring TEDx talk from Ami about her work and how she wields her camera to amplify others' voices.

"Falling in Love With a Unicorn | AMI VITALE | TEDxBergamo." YouTube, TEDx Talks, 20 May 2019, <https://www.youtube.com/watch?v=00bunXTIKJw>. Accessed 13 Oct. 2023.



Web Resources for Educators & Students

▶ **National Wildlife Foundation** | <https://www.nwf.org/Educational-Resources>, <https://www.nwf.org/Kids-and-Family>

▶ **U.S. Fish & Wildlife Services** | <https://www.fws.gov/training/learning-resources%20>



Local Resources

▶ **Five Rivers MetroParks** | <https://www.metro parks.org/conservation-kids/>, <https://www.metro parks.org/things-to-do/youth-teens/>



▶ **Ohio Department of Natural Resources** | <https://ohiodnr.gov/discover-and-learn/education-training/environmental-education>



Brought To You By
DAYTON LIVE

138 North Main Street Dayton, OH 45402

**DAYTON LIVE
DISCOVERY**

The Education and Engagement programs of Dayton Live are made possible through the support and commitment of the following sponsors and donors whose generosity have opened the door of live theatre to the students of the Miami Valley:

PROGRAM SPONSORS

Title Sponsor

Mathile Family Foundation

Signature Sponsor

The Berry Family Foundation

Foundation Support

A Grant From the General Fund of the
Troy Foundation

Government Sponsors

Montgomery County Arts & Cultural District
Ohio Arts Council

FUELING EDUCATION

Greater Dayton Regional Transit Authority

DAYTON LIVE CREATIVE ACADEMY

Interested in learning more about theatre?!

The Dayton Live Creative Academy offers a variety of professionally curated performing arts experiences for all ages. From classes for beginners, and summer camps for the adventurous, to Broadway after-school intensives for the curious, there are year-round activities for everyone in the family. Join us for fun, for adventure, and to develop your own creativity. This is performing arts education for **EVERYONE!**

EDUCATION AND BROADWAY PROGRAMS

Broadway Camps and Intensives

Broadway Master Classes

Background on Broadway

Bagels & Broadway

<https://www.daytonlive.org/education>

Dayton Live is an ACE Qualified Education Service Provider! Find out more about ACE funds: <https://education.ohio.gov/ohioace>

**Rave Reviews
for Ami Vitale's
Work**

“Ami has lived in mud huts and war zones, contracted malaria, and donned a panda suit—keeping true to her belief in the importance of living the story.”

ArtCenter College of Design

“After a series of talks in the Vital Impacts Student Speaker Series (where Vitale has been a featured speaker), 99.5 % of educators agreed students enjoyed the program, and 99.1 % said students’ knowledge of environmental topics improved after attending these talks.”

Visual Impacts

“Vitale's work highlights the fragile balance between humanity and wildlife, emphasizing the urgent need for conservation. Through her lens, she connects audiences to critical local conservation issues that have global significance, illustrating our deep interconnectedness with each other and the natural world.”

Photo Vogue



Ohio Arts
COUNCIL

CareSource
FOUNDATION

MONTGOMERY
COUNTY